

*Quality Parts Since 1957*



For more than 60 years, Parker Industries has been providing high-quality, competitively-priced metal stamping and related services. We are an ISO 9001 certified company with a long track record of delivering on our promises. As a result, today we produce a broad array of parts and assemblies for customers who are leaders in their industries.

### **Metal Stamping and Much More**

While metal stamping is our core business, we also offer many important complementary capabilities that enable us to produce parts, from simple to complex. In addition to metal stamping we offer laser and plasma cutting, forming, CNC machining, welding and more.



**[ParkerIndustriesInc.com](http://ParkerIndustriesInc.com)**

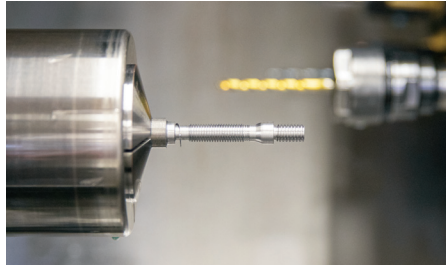


# PARKER INDUSTRIES CAPABILITIES



## Metal Stamping

We use mechanical presses from 45 tons to 500 tons and deep draw presses from 110 to 800 tons, along with an array of automated feeding equipment. As a result, the range of the parts we produce on any given day is quite impressive. We also have the ability to maintain and produce tooling internally.



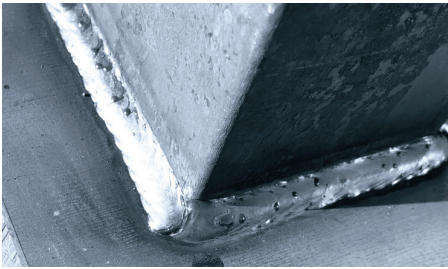
## CNC Machining

Our production facilities allow us to offer CNC 3, 4 and 5-axis milling capabilities. CNC turning capabilities of 70" diameter plus and true 6-axis CNC boring mill capabilities.



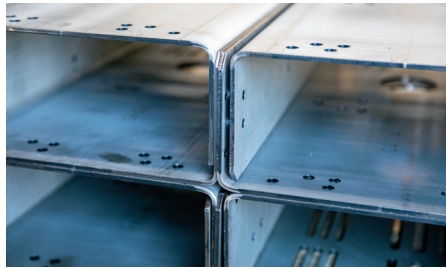
## Laser and Plasma Cutting

Our two 4000 watt lasers are capable of cutting up to 3/4" thick carbon steel, 3/8" stainless steel or 3/8" aluminum out of sheets up to 5' x 10' in size. We added HD plasma cutting capabilities in 2013 which can cut carbon steel up to 3" thick with a maximum sheet size of 6' x 24'.



## Welding

Our capabilities also include certified welding, from simple to complex. For example, we provide MIG, TIG and stick welding for carbon steel, stainless steel and aluminum.



## Press Brakes

With press brakes having a maximum of 90 tons of pressure and length of 10', we can meet most forming needs. We also have the capability to construct custom tooling for specific requirements.



## Other Services

In addition to producing component parts we partner with trusted suppliers for painting, electroplating, black oxide, heat treating and other services. We also offer regional delivery services using our company trucks. If you need a specific service please contact us.

## Prototype Parts, Reverse Engineering & 3D Printing

We are well-equipped to prepare accurate prototypes and reverse engineering of your parts before you invest in tooling. And after your design process is complete we can assist you with the tooling itself, whether it involves maintaining your existing dies or creating new ones. Our in-house prototype and machine shop departments employ a wide assortment of equipment including standard and CNC milling machines, surface grinders, lathes, saws, drill presses and wire EDM equipment. We also have full 3D metal printing capabilities for prototype parts or tooling from titanium, Inconel, or tool steel.

4867 Rhoney Road  
Connelly Springs, NC 28612  
Phone: 828-437-7779  
Fax: 828-437-6686  
[info@parkerindustriesinc.com](mailto:info@parkerindustriesinc.com)

**[ParkerIndustriesInc.com](http://ParkerIndustriesInc.com)**

**ISO 9001 CERTIFIED**

